

## Tinguian/Itneg Rep Weave Sample

Kathleen Johnson :  
[travlinweaver@yahoo.com](mailto:travlinweaver@yahoo.com)  
17409 Sylvester Road SW  
Burien, WA 98166

Sigrid Piroch  
[SigridArtsStudio@aol.com](mailto:SigridArtsStudio@aol.com)  
261 Harvey Road  
Foxburg, PA 16036-0398

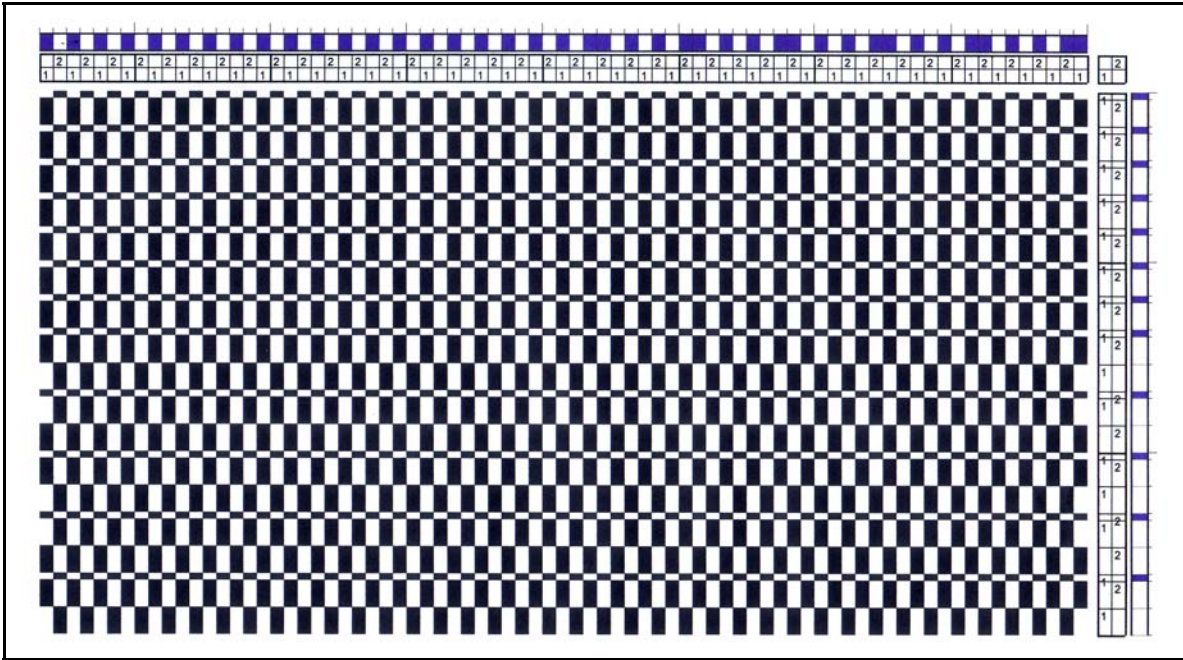
### **July 8, 2006**

Just a year ago, I spent three months in the Philippines and spent as much time as possible in researching and collecting a type of block weave blanket I had first seen in the Fine Arts Academy in Honolulu. They were identified only as “ Shaman or Chief’s blanket; Tinguian, Luzon, Philippines”. When I got to the Philippines, I found that there is a whole range of blankets from the Tinguian/Itneg of Northern Luzon, some figurative, and some block weave in the geometrical optical illusion style we are familiar with in some hand-woven early American coverlets.

When I looked at the structure, I was of the opinion that it was, in American terms, a modified warp repp in two blocks ( in which one block is alternating thick and thin yarn, and the second block alternating thick, thick, thin). This has been born out through an analysis I did with the help of Sigrid Piroch .I am supposing that the rest of the blankets I collected are done in the same structure on the same block design system. These textiles were woven exclusively in the mountain district of Abra by the people known as the Tinguian (literally “mountain people”) or Itneg.on the backstrap loom. Panels were joined with often-elaborate embroidered joinings. I was able to examine and photograph a private collection of old blankets belonging to Roland Go and then purchase this new sample at Nardas, in Baguio City, Luzon. The new piece, which I purchased and is shown in the current analysis, was woven as a runner. I was told that there are only two or three women who now can weave this cloth. (kfj)

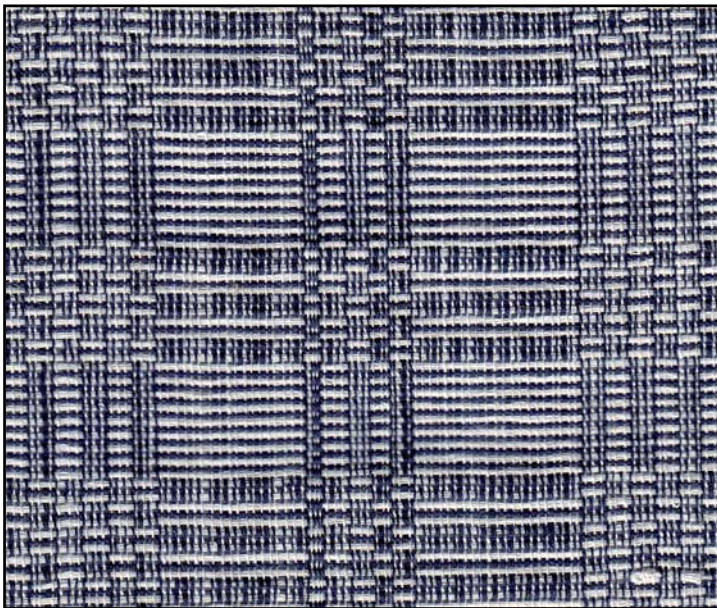


**Tinguian man, photo from early 1900's**

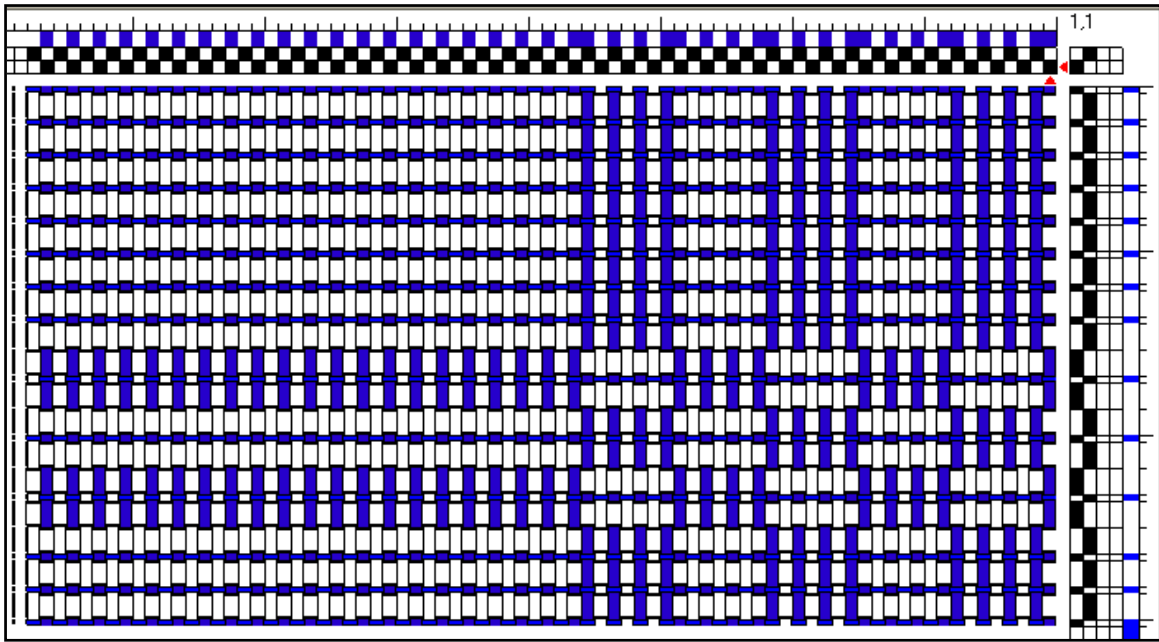


Plain weave structure with variable thickness in weft.

\*Warp direction, 9 times in one repeat, the blue singles cotton is doubled and Used and woven as one thread.



Warp faced plain weave  
 Weft: five ply white cotton and single ply blue cotton  
 Warp: singles whit cotton, singles blue cotton  
 Sett: (cloth finished) 60 epi  
 PPI: 28  
 One repeat: 77 ends  
 Picks in one repeat: 29



Full draft, one repeat

